



Trinity College Dublin

Coláiste na Tríonóide, Baile Átha Cliath

The University of Dublin

Postgraduate Diploma in Social Policy & Practice



The Open Evening will begin shortly



Welcome

- At today's webinar
 - Trinity College Dublin
 - The Programme
 - Learning Online
 - Is this Programme for You?
 - Resources and Support
 - Admissions and Applications
 - Current students' experiences
- Your questions
 - At any time, use the chat box or microphone
 - Technical problems - use the chat box



Dr Edurne Garcia
Programme Director



Dr Louise Caffrey
Programme Coordinator



Trinity College Dublin

Trinity College Dublin was established in 1592

It is ranked the 1st university in Ireland and 108 in the World (2020)

It ranks 92nd in the world for employability (2020)

It is the 16th most international university in the world (2019)

<https://www.tcd.ie/study/international/why-trinity/index.php>



The Programme

- Develop your understanding of social policy options open to governments.
- How the implementation of social policy can impact on practice.
- Apply social science theories and social research evidence to the critical analysis and evaluation of social policies and their implementation.

Contemporary Social Policy
Debates and Analysis

The Family and Society

Responding to

Homelessness:

International and Irish

Experiences

Principles of Social Policy

Leading Human Service

Organisations

Human Rights (Disability)



Trinity College Dublin

Coláiste na Tríonóide, Baile Átha Cliath

The University of Dublin

The Programme Staff

- Actively engaged in research:
 - relevant to the development, implementation and evaluation of social policy
 - national and international research partnerships and collaboration
 - evidence-based teaching
- Experienced teaching diverse groups of students



Dr. Stephanie Holt >
Head of School & Course Director,
PG Dip in Child Protection & Welfare
Tel: +353 1 896 3908
Email: sholt@tcd.ie



Professor Eoin O'Sullivan >
Professor in Social Policy
Tel: +353 1 896 2548
Email: tosullivan@tcd.ie



Dr. Louise Caffrey >
Assistant Professor, Social Policy &
Course Coordinator, PG Dip in Social
Policy & Practice
Tel: +353 1 896 3708
Email: caffrelo@tcd.ie



Dr. Edurne Garcia Iriarte >
Assistant Professor, Intellectual
Disability & Course Director, PG Dip
in Social Policy & Practice
Tel: +353 1 896 2200
Email: iriartee@tcd.ie



Mr. Jason O'Callaghan >
Executive Officer, BA in Sociology &
Social Policy, MSc in Applied Social
Research & PG Dip/MSc in Social
Policy & Practice
Tel: +353 1 896 3593
Email: OCALLA/W@tcd.ie



Dr. Catherine Conlon >
Assistant Professor, Social Policy &
Course Director, BA in Sociology &
Social Policy
Tel: +353 1 896 1312
Email: conloncc@tcd.ie



Dr. Julie Byrne >
Assistant Professor in Online
Education & Development (Part-
Time)
Tel: +353 1 896 4648
Email: byrnej18@tcd.ie

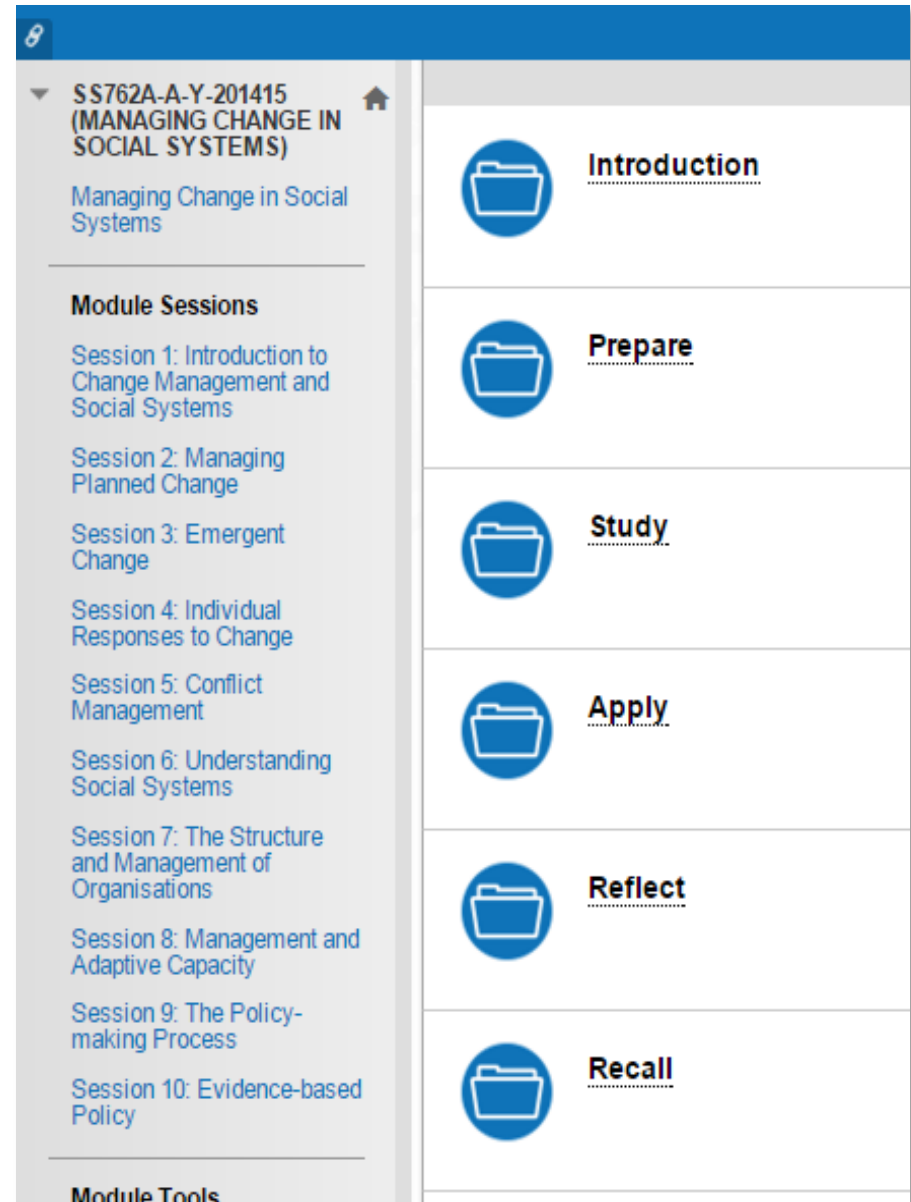
Learning Online

Weekly materials

- Series of folders
 - Presentations
 - Audio
 - Video
 - Readings

Weekly engagement

- Series of exercises
 - Forum
 - Blog
 - Learning journal
 - Tutorial



SS762A-A-Y-201415 (MANAGING CHANGE IN SOCIAL SYSTEMS)

Managing Change in Social Systems

Module Sessions

Session 1: Introduction to Change Management and Social Systems

Session 2: Managing Planned Change

Session 3: Emergent Change

Session 4: Individual Responses to Change

Session 5: Conflict Management

Session 6: Understanding Social Systems

Session 7: The Structure and Management of Organisations

Session 8: Management and Adaptive Capacity

Session 9: The Policy-making Process

Session 10: Evidence-based Policy

Module Tools

- Introduction
- Prepare
- Study
- Apply
- Reflect
- Recall

Some questions you will ponder...

- How is social policy in contemporary societies responding to the global challenges of the 21st century such as poverty?
- How are disadvantaged groups featured in social policy?
- When did society start classifying people as “normal”? What effect does the concept of normalcy have in current social policies?
- How effective is policy in making cities accessible for people with disabilities?
- What explains the gender pay gap?
- Is Universal Basic Income the solution to the changing context of work?



The Tutorial

The screenshot displays a Zoom meeting interface. The main window shows a presentation slide titled "Apply" with the subtitle "Managing Individual Responses to Change". The slide features a graph titled "Performance and self-esteem" showing two curves over five stages: Denial, Defence, Discarding, Adaptation, and Internalisation. The Y-axis represents levels from Low to High, and the X-axis represents Time. The "Self-esteem" curve (solid line) starts high, drops during the Denial and Defence stages, reaches its lowest point during Discarding, and then rises through Adaptation and Internalisation. The "Performance" curve (dotted line) starts high, remains high through Denial and Defence, drops during Discarding, and then rises through Adaptation and Internalisation.

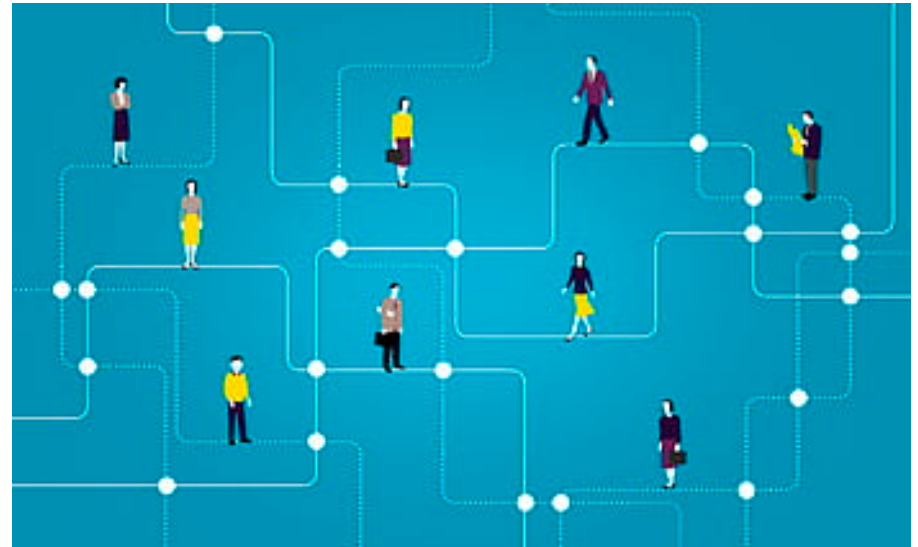
Below the graph, the stages are color-coded: Stage 1 (Denial, red), Stage 2 (Defence, purple), Stage 3 (Discarding, green), Stage 4 (Adaptation, orange), and Stage 5 (Internalisation, blue).

The chat window on the right shows a list of attendees and a message history. The attendees list includes 15 attendees, with 2 moderators (DR. JULIE BYRNE and MS. MARIA FITZGERA...) and 13 participants. The chat history shows messages from MISS ISABEL JANE AUST, MRS CLARE JANE DUFFY, and MRS EMMA JANE TYRRELL, discussing the stages of change and self-esteem.

At the bottom of the Zoom window, there are navigation icons for back, forward, and search, along with a navigation bar for the presentation slide (lead_hum_s07.pdf (5/7)).

Career Paths

- Career Change
 - Social Work
 - Social Research
 - Services Provision
 - Policy Development
 - Advocacy
- Career Development
 - Services Management
 - Corporate Social Responsibility



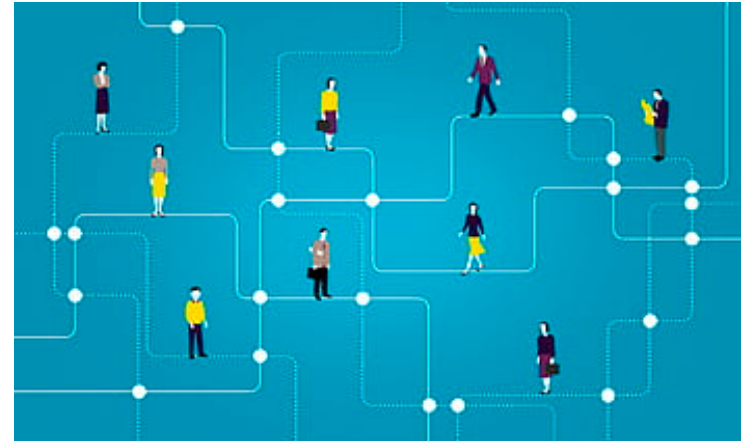
Commitment

- Time
 - 60 ECTS Sept-May
 - C. 10-15 hours per week
 - Tutorial attendance
 - Continuous assessment
- Skill Development
 - Research
 - Reading
 - Discussion
 - Analysis
 - Online learning readiness



Academic Progression Routes

- MSc. in Social Policy and Practice
- Masters in Social Work
- Masters in Applied Social Research
- Masters in Public Policy



Resources and Support

- Students have physical and remote access to TCD resources and supports e.g.
 - Library
 - Student Learning and Development
 - Sports Centre
- All students receive a TCD student card for on campus access



Assessment

- No examinations
- Essays
- Projects
- Portfolios
- Case Studies
- Preparation supports for academic writing
- Feedback on each assessment



Admissions and Applications

- See website for FAQs and link to electronic application process
 - ✓ Complete the application form online
 - ✓ Two references – 1 academic & 1 professional
 - ✓ Official Transcripts
 - ✓ Curriculum Vitae
 - ✓ Current photo



Level 8
2.2 min



Closing Date:
30 June
2020

- All documentation is required by July 31st before you can be made a firm offer
- Start your application, save and add documentation

Fees and Scholarship

Fees 2020/21

Postgraduate Diploma in Social Policy and Practice

- EU students 6,313 €
- Non-EU students 12,047 €

M.Sc Social Policy and Practice

- EU students 7,458 €
- Non-EU students 14,948

Scholarship (non-EU applicants)

- €3,000
- Applications must be submitted before 15th June 2020
- Applicants must meet programme entry requirements
- Applications are assessed based on academic achievement and potential to contribute to the overall TCD and SWSP community.

<https://www.tcd.ie/swsp/postgraduate/Social-Policy-Practice/fees.php>

Current students' experiences

Mr. Xavier Johnson

Ms. Shauna McCloskey

Ms. Harriet Doyle



Trinity College Dublin

Coláiste na Tríonóide, Baile Átha Cliath

The University of Dublin

Any Questions?

Dr Edurne Garcia iriartee@tcd.ie

Dr Louise Caffrey louise.caffrey@tcd.ie

Jason O'Callaghan, Course Administrator
ocallajw@tcd.ie

